

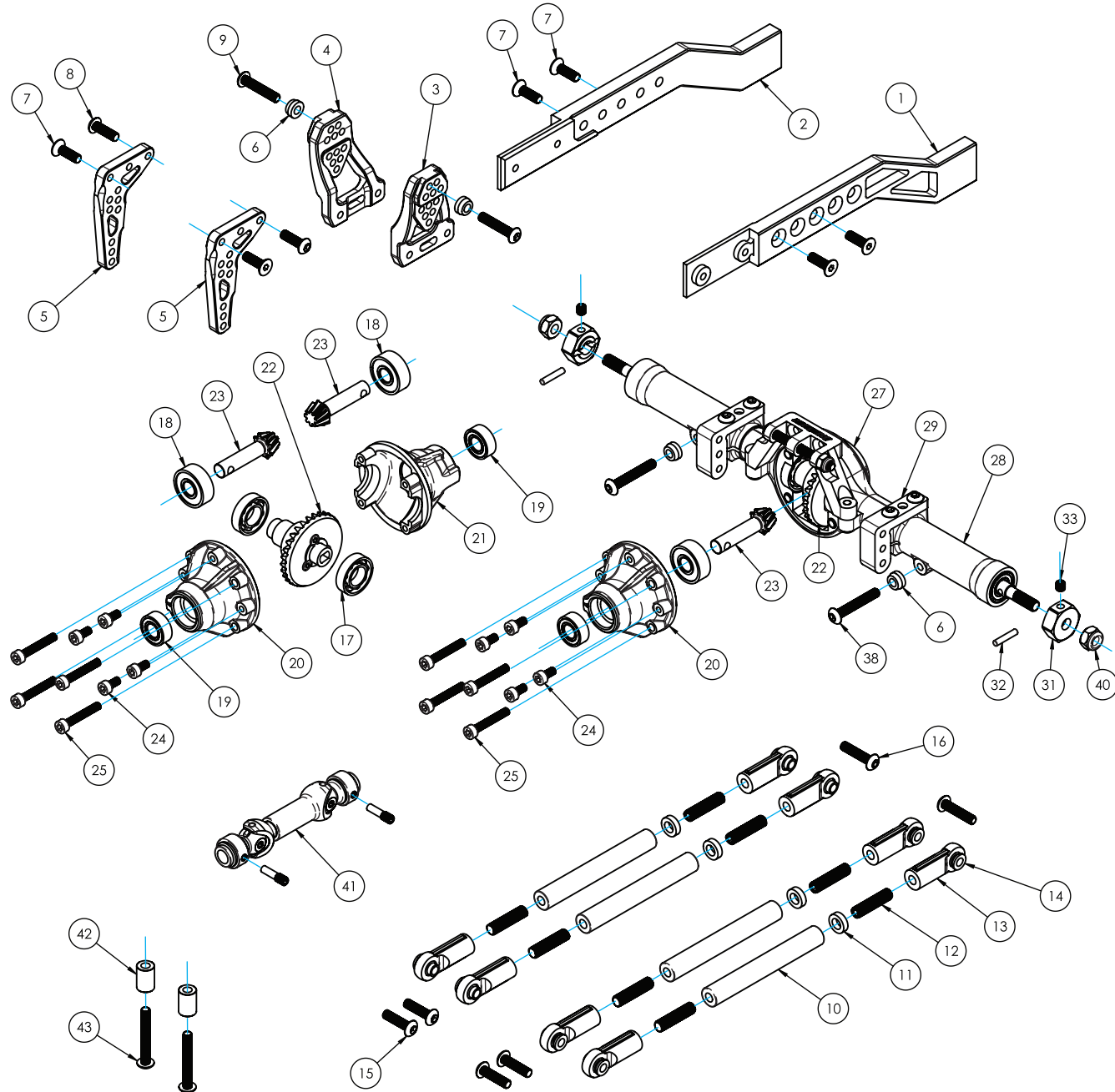
# 6x6 Conversion Kit for BRX02

Difficulty Level: ★★☆☆☆

## INSTALLATION MANUAL

Parts Included:	Parts Numbers:	Qty.
(1) BRX02-D110 6X6 Extension Rail L	#BRX026601L	1
(2) BRX02-D110 6X6 Extension Rail R	#BRX026601R	1
(3) Shock Mount Rear L v1	#BRX020018R	1
(4) Shock Mount Rear R v1		1
(5) Lower Link Mount	#BRX026602	2
(6) 6 Spacer_D3x6x3	#BRLC7041	4
(7) M3 x 10 Socket Counter Sunk Screw	#BRASFH3010	6
(8) M3 x 10 round head socket cap Screw	#BRASBH3010	4
(9) M3 x 16 Socket Round Cap Screw	#BRASBH3016	6
(10) Link - 51.5mm	#BRX026603	4
(11) D4 x 7 x 2 Spacer	#BRASSPD427/N	4
(12) M4 x 16 Set Screw	#BRASST4016	8
(13) M4 Straight Nylon Rod End 18.5mm	#BRW750306A	8
(14) Pivot Ball	#BRW750300	8
(15) M3 x 12 Socket Round Cap Screw	#BRASBH3012	4
(16) M3 x 14 Socket Round Cap Screw	#BRASBH3014	2
(17) Ball Bearing 7 x 14 x 3.5mm	#BBZ687OPEN	4
(18) Ball Bearing 5 x 14 x 5mm	#BBZ6052RS	3
(19) Ball Bearing 5 x 11 x 4mm	#BBZMR1152RS	5
(20) Third Member (A)	#BRX026604	2
(21) Shaft Outlet (A)	#BRX026605	1
(22) 6x6 Bevel Spur Gear -Reverse	#BRX026606	2
(23) Spiral Bevel Gear 8T	#BRX026607	3
(24) M2.5 x 5 Socket Cap Screw	#BRASCH2505	8
(25) M2.5 x 16 Socket Cap Screw	#BRASCH2516	8
(26) Axle - Housing	#BRLC7024	1
(27) Diff Cover		1
(28) BRX90_lock out_CA	#BRD9012/CA	2
(29) Aluminum Link Mount	#BRLC7005	2
(30) Aluminum Low Profile Truss	#BRLC7004	1
(31) Hex Adapter - 8mm	#BR113008	2
(32) D2 x 10mm pin	#BRASPIN210	2
(33) M3x3 Set Screw	#BRASST3003	2
(34) Ball Bearing 5 x 9 x 3mm	#BBZMR952RS	2
(35) Ultra Hard Steel Axle Rear Shaft	#BRBD9002	2
(36) M2 x 4 Socket Cap Screw	#BRASCH2004	1
(37) M3 Nuts Nonloose		1
(38) M3 x 20 RS	#BRASBH3020	2
(39) M3 x 30 RS	#BRASBH3030	1
(40) M4 Nyloc Nut	#BRASNUTM4	2
(41) BRX02 Link 6x6 driveshaft	#BRX026608	1
(42) Spacer d3 x D6 x 9mm	#BRX026609	2
(43) M3 x 22 Socket Round Cap Screw	#BRASBH3022	2
(44) KUDU™ 90mm Coilover Scale Shock Absorbers	#BRSH0090-SP	2

Remarks: Parts not indicated are the same as the BRX02 stock axle.



# 6x6 Conversion Kit for BRX02

Difficulty Level: ★★☆☆☆

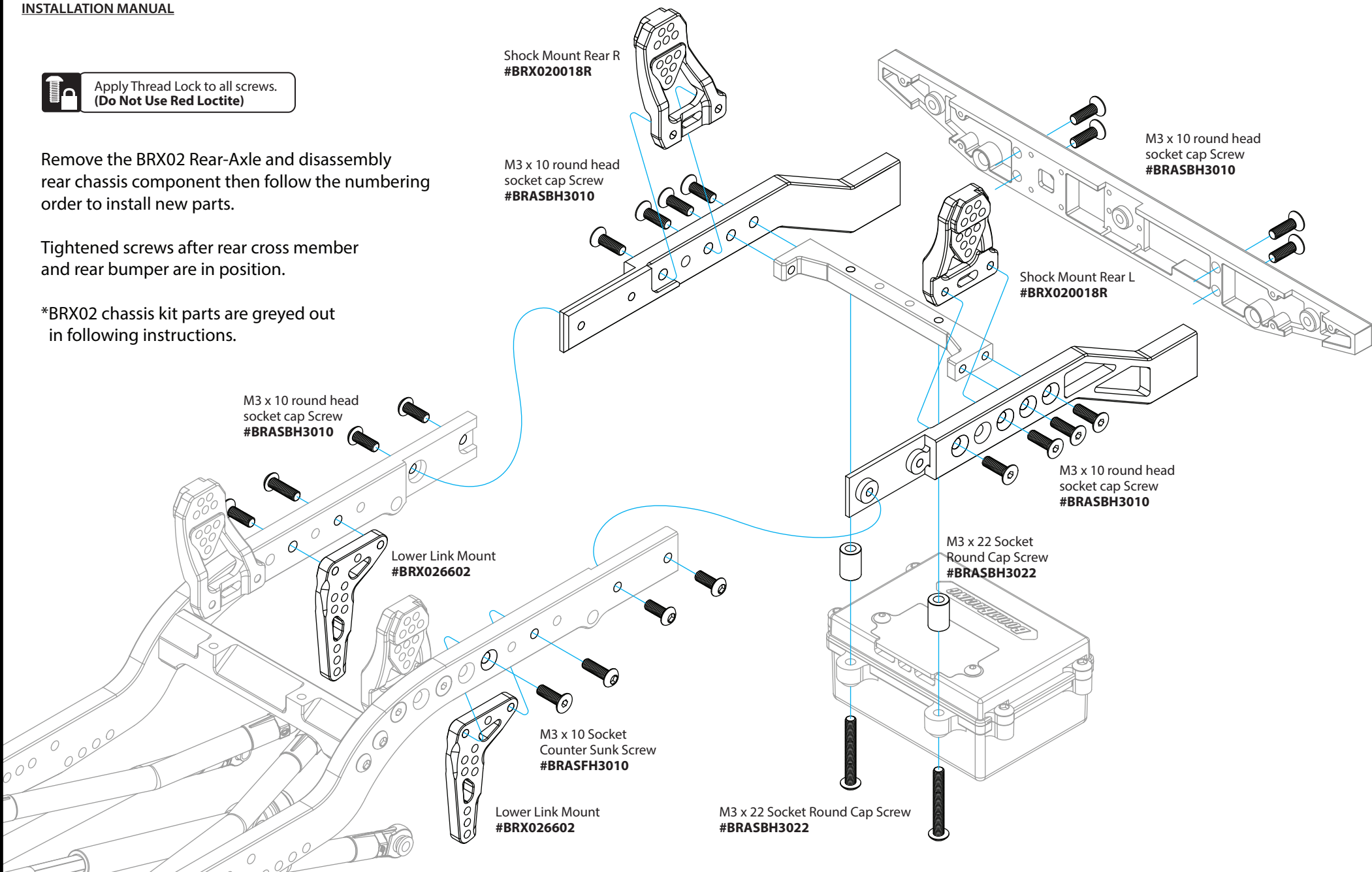
## INSTALLATION MANUAL

 Apply Thread Lock to all screws.  
**(Do Not Use Red Loctite)**

Remove the BRX02 Rear-Axle and disassembly rear chassis component then follow the numbering order to install new parts.

Tightened screws after rear cross member and rear bumper are in position.

\*BRX02 chassis kit parts are greyed out in following instructions.



Shock Mount Rear R  
#BRX020018R

M3 x 10 round head  
socket cap Screw  
#BRASBH3010

M3 x 10 round head  
socket cap Screw  
#BRASBH3010

Shock Mount Rear L  
#BRX020018R

M3 x 10 round head  
socket cap Screw  
#BRASBH3010

Lower Link Mount  
#BRX026602

M3 x 10 round head  
socket cap Screw  
#BRASBH3010

M3 x 22 Socket  
Round Cap Screw  
#BRASBH3022

M3 x 10 Socket  
Counter Sunk Screw  
#BRASFH3010

Lower Link Mount  
#BRX026602

M3 x 22 Socket Round Cap Screw  
#BRASBH3022


# 6x6 Conversion Kit for BRX02

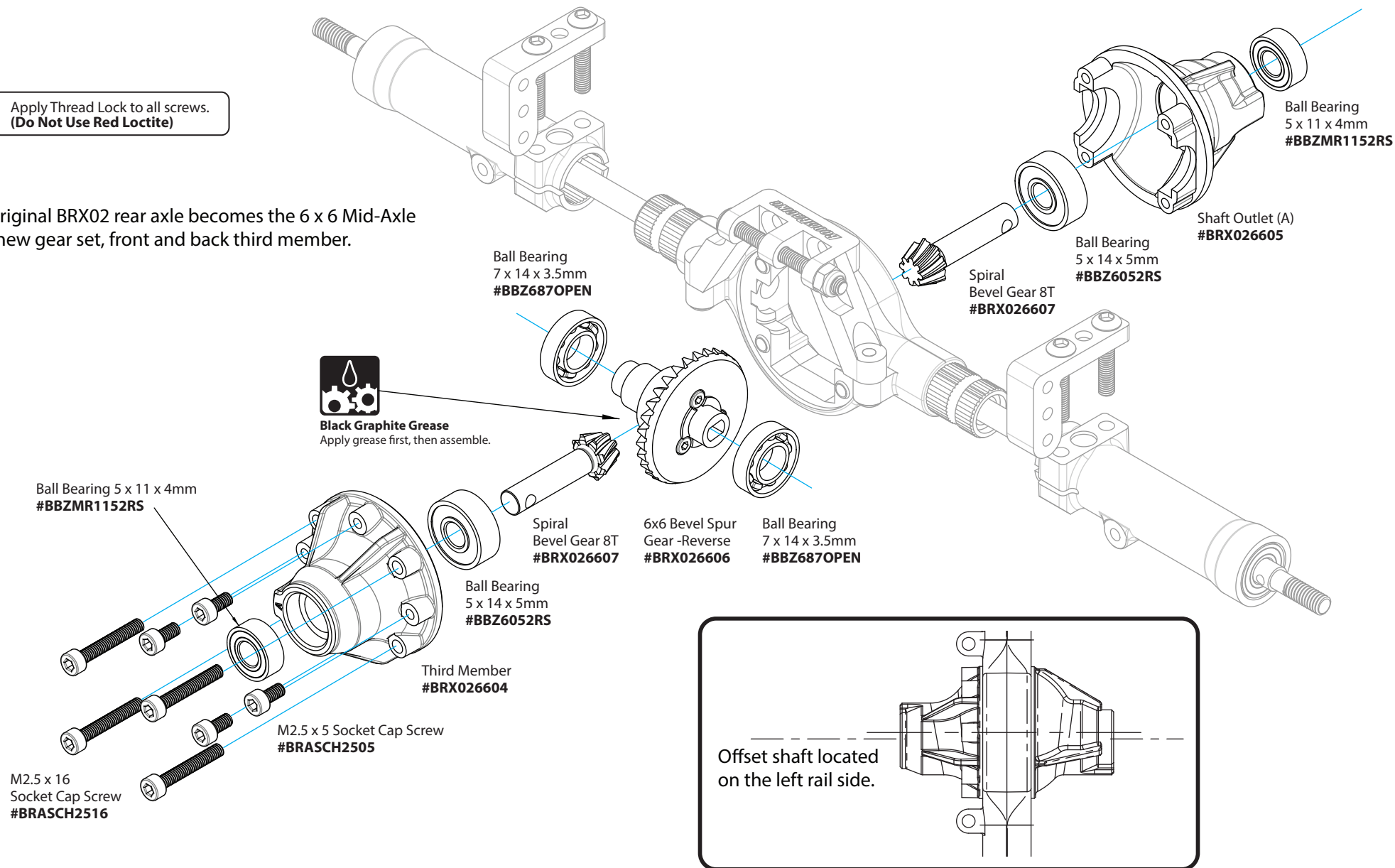
Difficulty Level: ★★☆☆☆

## INSTALLATION MANUAL

 Apply Thread Lock to all screws.  
(Do Not Use Red Loctite)

The original BRX02 rear axle becomes the 6 x 6 Mid-Axle with new gear set, front and back third member.

 **Black Graphite Grease**  
Apply grease first, then assemble.



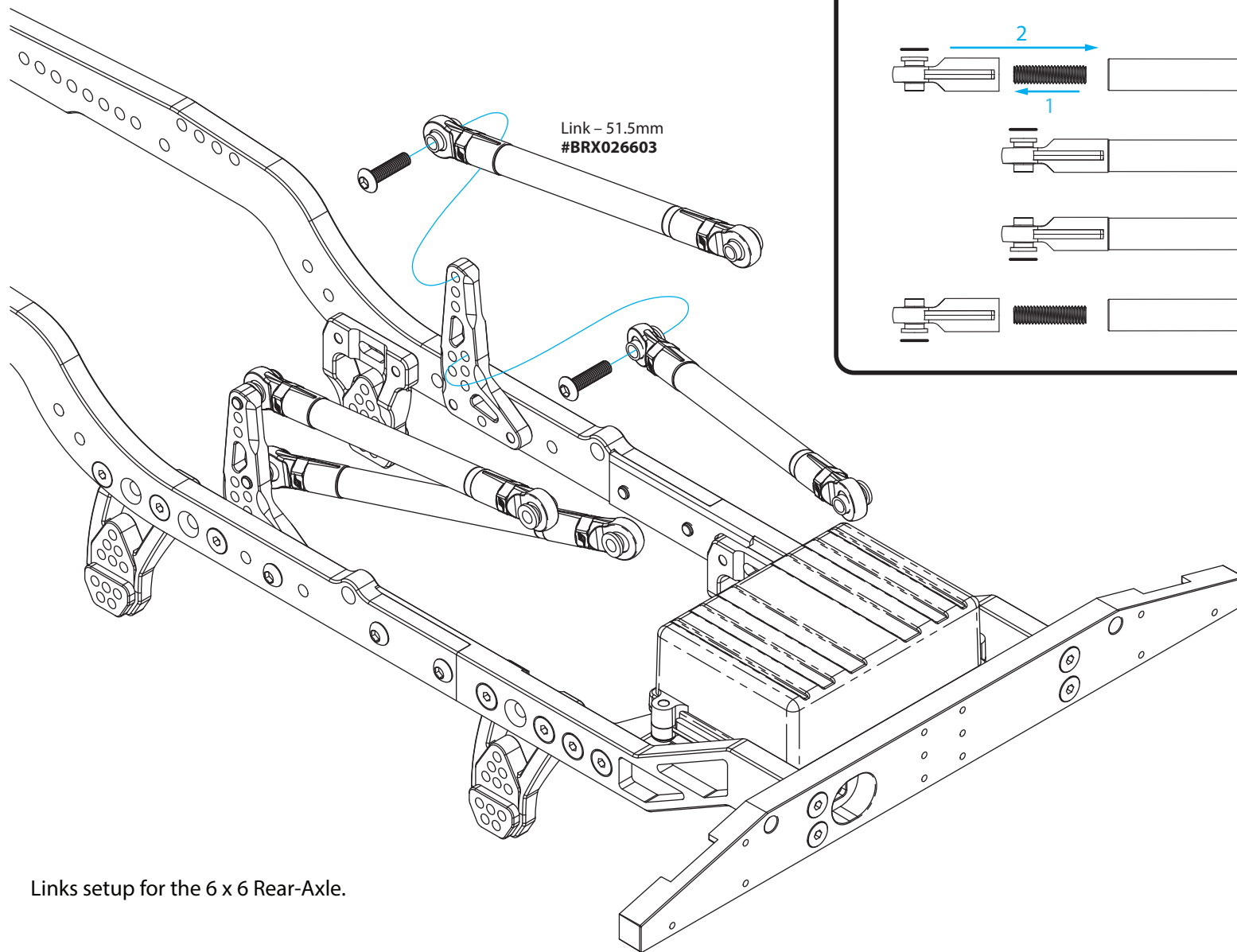
## 6x6 Conversion Kit for BRX02

Difficulty Level: ★★☆☆☆

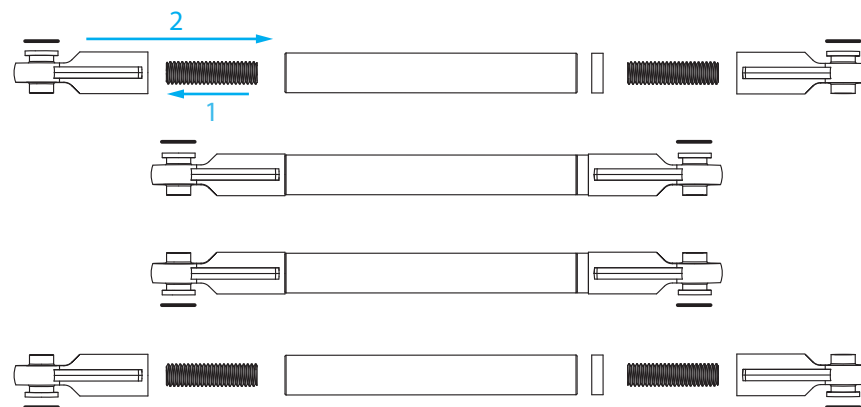
### INSTALLATION MANUAL

 Apply Thread Lock to all screws.  
(Do Not Use Red Loctite)

Link – 51.5mm  
#BRX026603



Install the set screw to the rod end, then to the aluminum link.  
Note the orientation of the pivot ball shoulder.



Links setup for the 6 x 6 Rear-Axle.

## 6x6 Conversion Kit for BRX02

Difficulty Level: ★★☆☆☆

### INSTALLATION MANUAL

 Apply Thread Lock to all screws.  
(Do Not Use Red Loctite)

Install the 6 x 6 Mid-Axle following the original BRX02 installation setting. Then install the new 6 x 6 Rear-Axle and the new final driveshaft.

6 Spacer\_D3x6x3  
#BRLC7041

M3 x 16 Socket  
Round Cap Screw  
#BRASBH3016

BRX02 Link  
6x6 driveshaft  
#BRX026608

M3 x 14 Socket  
Round Cap Screw  
#BRASBH3014